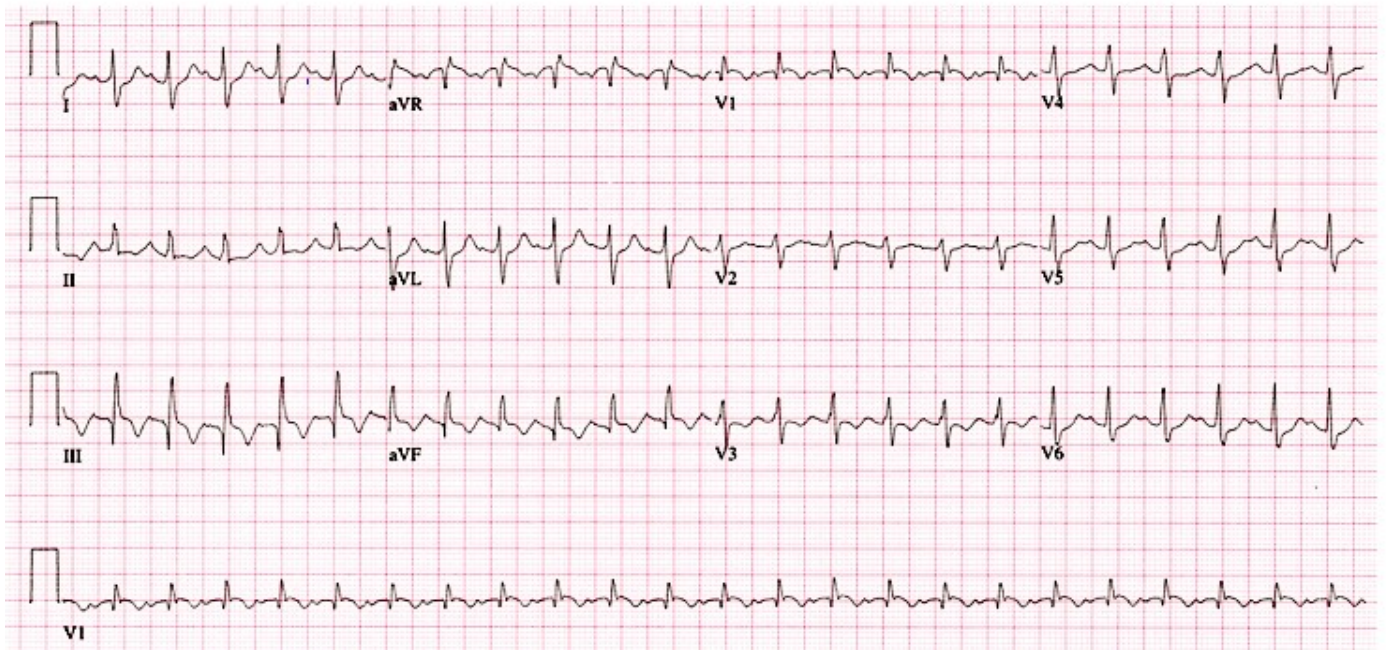


Prova pratica n. 3

Donna di 80 anni con recente frattura di femore



Prova pratica n. 3

Uomo di 77 anni dolore toracico



Prova pratica n. 3

80 anni

FiO2 21%

---

Valori emogas			
pH	7,438		[ 7,350 - 7,450 ]
↓ pCO <sub>2</sub>	32,1	mmHg	[ 35,0 - 45,0 ]
↓ pO <sub>2</sub>	58,9	mmHg	[ 75,0 - 100 ]
Valori ossimetrici			
ctHb	11,1	g/dL	[ - - ]
Hct <sub>c</sub>	34,1	%	[ - - ]
↓ sO <sub>2</sub>	91,5	%	[ 95,0 - 99,0 ]
FO <sub>2</sub> Hb	89,5	%	
FCOHb	1,7	%	[ 0,0 - 2,0 ]
FHHb	8,3	%	
FMetHb	0,5	%	[ - 1,5 ]
Valori calcolati			
p50 <sub>c</sub>	24,83	mmHg	
ctO <sub>2c</sub>	14,0	Vol%	
ρO <sub>2(a)</sub> /FO <sub>2(l)</sub> <sub>c</sub>	280	mmHg	
Stato acido-base			
↓ cHCO <sub>3</sub> <sup>-</sup> (P) <sub>c</sub>	21,7	mmol/L	[ 22,0 - 29,0 ]
↑ cHCO <sub>3</sub> <sup>-</sup> (P.st) <sub>c</sub>	22,7	mmol/L	[ 17,0 - 20,0 ]
cBase(B) <sub>c</sub>	-1,9	mmol/L	[ -2,0 - 2,0 ]
↓ cBase(Ecf) <sub>c</sub>	-2,5	mmol/L	[ -1,0 - 1,0 ]
Valori elettroliti			
↓ cNa <sup>+</sup>	135	mmol/L	[ 136 - 146 ]
↓ cK <sup>+</sup>	3,5	mmol/L	[ 3,5 - 5,3 ]
cCl <sup>-</sup>	103	mmol/L	[ 97 - 110 ]
cCa <sup>2+</sup>	1,19	mmol/L	[ 1,15 - 1,25 ]
Anion Gap <sub>c</sub>	10,6	mmol/L	
Valori metaboliti			
↑ cGlu	177	mg/dL	[ 70 - 110 ]
↑ cLac	2,2	mmol/L	[ 0,5 - 1,6 ]
ctBil	0,0	mg/dL	[ - - ]

---