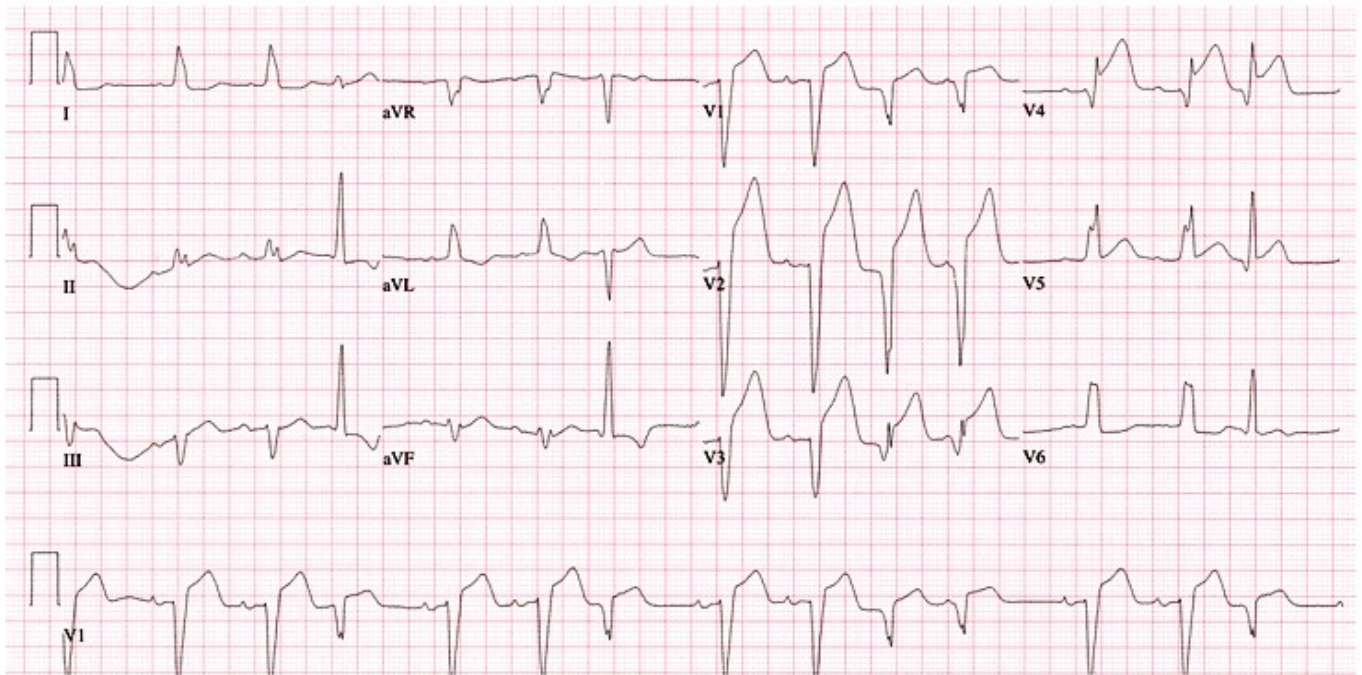


Prova pratica n. 1

Donna di 91 anni con dolore toracico e dispnea



Prova pratica n. 1

Donna 97 anni



Prova pratica n. 1

FiO2 21%

Valori emogas			
↓ pH	7,287		[7,350 - 7,450]
↓ pCO ₂	31,5	mmHg	[35,0 - 45,0]
pO ₂	78,2	mmHg	[75,0 - 100]
Valori ossimetrici			
ctHb	12,0	g/dL	[- -]
Hct _c	36,8	%	[- -]
↓ sO ₂	93,9	%	[95,0 - 99,0]
FO ₂ Hb	89,2	%	
↑ FCOHb	4,4	%	[0,0 - 2,0]
FHHb	5,8	%	
FMethb	0,6	%	[- 1,5]
Valori calcolati			
p50 _c	29,61	mmHg	
ctO _{2c}	15,2	Vol%	
pO ₂ (a)/FO ₂ (l) _c	373	mmHg	
Stato acido-base			
↓ cHCO ₃ ⁻ (P) _c	15,0	mmol/L	[22,0 - 29,0]
↓ cHCO ₃ ⁻ (P,st) _c	16,1	mmol/L	[17,0 - 20,0]
↓ cBase(B) _c	-10,5	mmol/L	[-2,0 - 2,0]
↓ cBase(Ecf) _c	-11,6	mmol/L	[-1,0 - 1,0]
Valori elettroliti			
cNa ⁺	137	mmol/L	[136 - 146]
cK ⁺	4,9	mmol/L	[3,5 - 5,3]
↑ cCl ⁻	113	mmol/L	[97 - 110]
cCa ²⁺	1,21	mmol/L	[1,15 - 1,25]
Anion Gap _c	8,5	mmol/L	
Valori metaboliti			
↑ cGlu	111	mg/dL	[70 - 110]
↑ cLac	2,6	mmol/L	[0,5 - 1,6]
ctBil	0,2	mg/dL	[- -]